



AUTONOMY™ DIGITAL LABEL PRINTER



FEATURES AND BENEFITS:

- CMYK Full-Color Digital Label Printer
- UV DoD Industrial Inkjet Technology
- Printing Variable Data with Label Artwork
- Onboard Barcode Generator
- Optional Full-Label Inspection System
- Network Connections for File/Data Integration
- Easy Operation with Minimal Maintenance
- Fully Servo Controlled Web Motion
- Serialization Ready



Take Control of Your Labels

FREEDOM:

Freedom to simplify your label printing process, in-house. Freedom to print multiple label SKUs from stock die-cut labels with no changeover; eliminating waste, reducing inventory, and reducing downtime.

FLEXIBILITY:

Flexibility to produce batch sizes from tens of thousands down to batch-size-one, on-demand. Flexibility to print high-impact label artwork in full-color with variable data.

CONFIDENCE:

Confidence that every label on the roll has been printed and 100% inspected, including variable and serialized data, when using the optional full-label inspection system.

CONTROL:

Control to incorporate dynamic variable data printed with the label artwork, providing late-stage customization. Take control of your labels with AUTONOMY™.

Printing what you need, when you need it!

©2021 ProMach Inc. ProMach reserves the right to change or discontinue specifications and designs shown in this brochure without notice or recourse.

PHONE
+1 856-273-3377

EMAIL
WLS@ProMachBuilt.com

WEB
www.WeilerLS.com

1256 North Church Street
Moorestown, NJ 08057, USA



AUTONOMY™ DIGITAL LABEL PRINTER

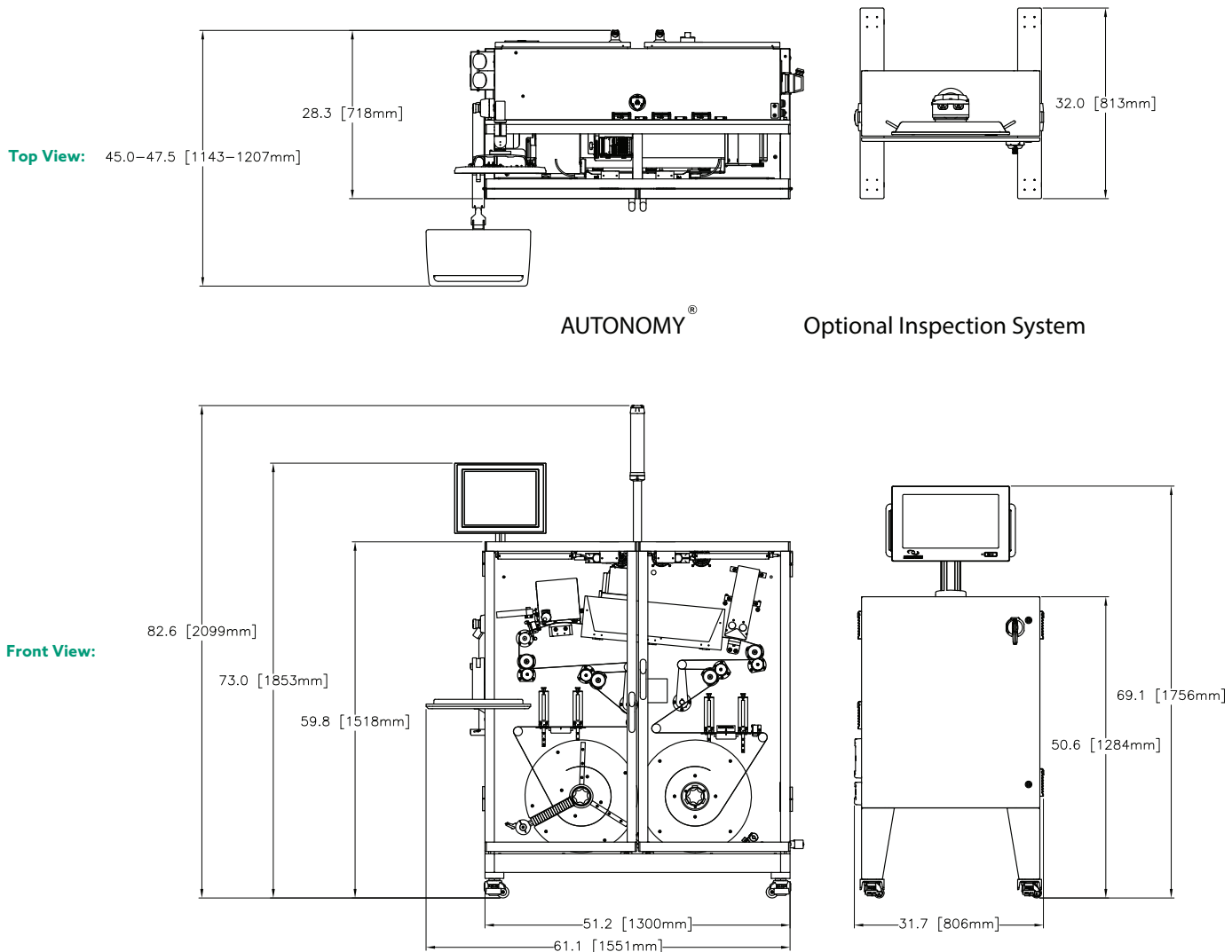
TYPICAL SPECIFICATIONS:

Maximum Roll OD	18.0 in (457.2 mm)
Roll Core ID	3.0 in (76.2 mm)
Maximum Print Width	2.8 in (72.0 mm)
Maximum Print Length	16.0 in (406.2 mm)

Maximum Web Width	4.25 in (108 mm)
Minimum Web Width	1.0 in (25.4 mm)
Maximum Printing Speed	1,800 in/min (46 m/min)*
Power Requirements	120/240 VAC, 50/60 Hz, 1 PH, 20 AMP

*Printing speeds may vary by label artwork, material, or inspections.

TYPICAL CONFIGURATION:



AUTONOMY®

Optional Inspection System

For over 30 years, Weiler Labeling Systems (WLS) has produced the most sophisticated and advanced pressure sensitive labeling solutions in the marketplace.

©2021 ProMach Inc. ProMach reserves the right to change or discontinue specifications and designs shown in this brochure without notice or recourse.

PHONE
+1 856-273-3377

EMAIL
WLS@ProMachBuilt.com

WEB
www.WeilerLS.com

1256 North Church Street
Moorestown, NJ 08057, USA